



CONVENTIONAL

Valid as of 01.04.2019

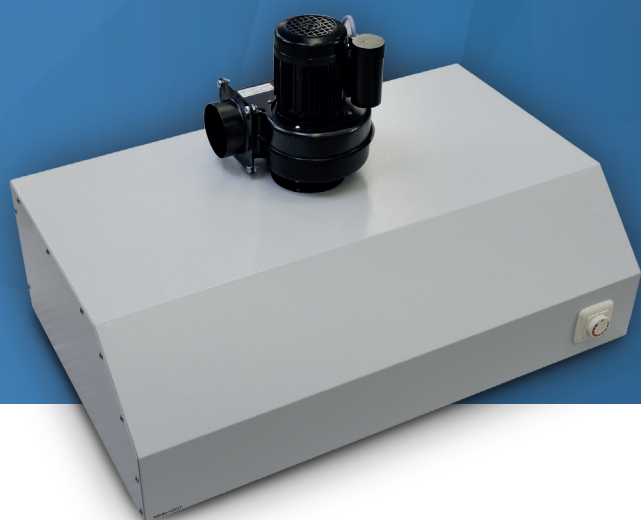
PREHEATING FURNACES



- ▼ Max. temperature 1150 °C
- ▼ Thermocouple PtRh-Pt, type S
- ▼ Individually controlled outlets for additional devices
- ▼ Timer function

| Program control | | M1 | P7 |
|---------------------------------|----|---------------|----------------------|
| Display | | 7-segment LED | 4-lines LCD |
| Programm numbers | | × | 30 |
| Steps and holding times | | 1 | 4 |
| Individual heat-rate settings | | × | 1-30 °C/min per step |
| frequency (Hz) | | 50/60 | 50/60 |
| Technical data | | KM | GL |
| Numbers of muffles | | 4 pieces 6x | 6 pieces 9x |
| Dimension heating-chamber W/D/H | mm | 150/170/100 | 200/250/110 |
| Power max. | W | 1600 | 2600 |
| Voltage range | V | 200-240 | 200-240 |
| Weight | kg | 31 | 70 |
| Dimensions W/D/H | mm | 400/400/480 | 480/520/580 |

EXTRACTOR HOODS



- ▼ Freely adjustable extraction power
- ▼ Stainless steel housing
- ▼ Powerful radial fan

✓ = standard ● = optionally available ⇄ = optionally available, but with reservations ✗ = not compatible

| Technical data | | DU1 | DU2 | DU3/2 | DU3/3 |
|-----------------------|----------------|-------------|--------------|--------------|--------------|
| Max. air capacity/min | m ³ | 7 | 14 | 20 | 20 |
| Exhaust pipe Ø | mm | 100 | 100 | 140 | 140 |
| 99h-timer | | ● | ● | ✓ | ✓ |
| Grease filters | | ✗ | ✗ | ✓ | ✓ |
| Power max. | W | 120 | 280 | 370 | 370 |
| Voltage range | V | 200-240 | 200-240 | 200-240 | 200-240 |
| Weight | kg | 16 | 26 | 47 | 54 |
| Dimensions W/D/H | mm | 500/600/510 | 1000/600/600 | 1200/700/400 | 1800/700/400 |

CATALYTIC CONVERTER/ EXHAUST BLOWER/ INTERMEDIATE FAN



| Technical data | | KN2 | DG2 | ZwL2 |
|---------------------|----------------|-----------|-----------|-----------|
| Max. air capacity/h | m ³ | 300 | 80 | 390 |
| Exhaust pipe Ø | mm | 150 | 80 | 150 |
| Power max. | W | 600 | 30 | 45 |
| Voltage range | V | 200 - 240 | 200 - 240 | 200 - 240 |
| Weight | kg | 4,4 | 2,9 | 1,9 |
| Dimensions D/H | mm | 170/390 | 160/480 | 200/155 |

Accessories

- ✓ standard
- optionally available
- 🕒 optionally available, but with reservations
- ✗ not compatible

| Accessories Preheating furnaces | | KM | GL |
|---------------------------------|-----------------------------|----|----|
| 8102000001 | Thermocouple PtRh-Pt, 160mm | ✓ | ✗ |
| 8102000002 | Thermocouple PtRh-Pt, 190mm | ✗ | ✓ |
| 8102000004 | Ceramic tray KM, 140/170mm | ✓ | ✗ |
| 8102000005 | Ceramic tray GL, 200/250mm | ✗ | ✓ |
| 8102000003 | Exhaust tube | ✓ | ✓ |
| 8103000001 | Door insulation KM, 242/185 | ✓ | ✗ |
| 8103000002 | Door insulation GL, 260/200 | ✗ | ✓ |

| Accessories Extractor hoods | | DU1 | DU2 | DU3/2 | DU3/3 |
|-----------------------------|----------------|-----|-----|-------|-------|
| 8103000004 | Grease filters | ✗ | ✗ | ✓ | ✓ |

| Accessories Catalytic converter Exhaust blower Intermediate fan | | KN2 |
|---|--|-----|
| 8103000005 | Filter honeycombs KN2; replacement set | ✓ |
| 8103000006 | Insulation fleece KN2 | ✓ |
| 8103000007 | Mounting adapter KN2 | ✓ |



Details

- | | | | |
|----------------|---------------------|---------------|------------------|
| 1 KM1 | Preheating furnace | 5 DG2 | Exhaust blower |
| 2 GLP7 | Preheating furnace | 6 OA41 | Furnace adapter |
| 3 DU3/3 | Extractor hood | 7 ZwL2 | Intermediate fan |
| 4 KN2 | Catalytic converter | | |

**DURABLE.
RELIABLE.
ACCURATE.**



DENTAL

MIHM-VOGT GmbH & Co. KG
Friedrich-List-Straße 8
76297 Stutensee-Blankenloch
Germany

Web www.mihm-vogt.de
Mail info@mihm-vogt.de