

Infinity® EEG Pod

The Infinity EEG Pod augments the neurological monitoring capabilities of Infinity patient monitors with diagnostic-quality EEG data. Using patented smart technology, the Infinity EEG Pod captures and processes EEG data.



The Infinity CentralStation enables waveform storage for 72 hours to aid in managing data about subclinical seizures, encephalopathies and comas. With real-time EEG surveillance capabilities, the Infinity EEG Pod works with Infinity monitors and workstations to provide critical information for clinical decision making.

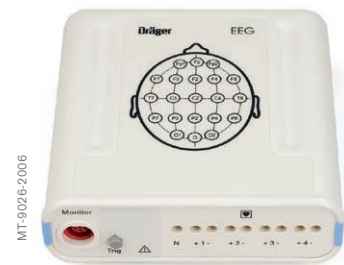
FEATURES

- Provides diagnostic-quality EEG data
- Offers real-time EEG surveillance
- Makes EEG data available to Infinity monitors and workstations

TECHNICAL DATA

Measuring Capabilities

EEG	4 channels
Sweep speeds	6.125, 12.5, 25, 50 mm/sec
EEG input signal range	±1.125 mV
EEG bandwidth	Low filter: 0.5 Hz (default) or 1.0 Hz High filter: 15Hz, 30 Hz (default) or Off Notch filter: On (default) or Off
DC offset	±200 mV DC
Baseline recovery time	≤5 sec
Input impedance	>100 MΩ @ 10 Hz
CMRR	100 dB @ 50 to 60 Hz referenced to floating ground, balanced electrode impedance
Isolation	CF type, (leakage less than 10μA)
Sampling rate	8000 samples per second
Electrode Impedance	Test current: 0.034μA
Measurement	Range: 0Ω–250 K/Ω Resolution: 1 KΩ



Infinity EEG Pod

The Infinity EEG Pod captures and processes EEG data

CONTINUING TECHNICAL DATA

EEG scales	5 to 500 μ V/div
EEG lead labels	Generic sites: None, Left, Right, Front, Back, Right Front, Right Back, Left Front, Left Back Specific sites: Fp, Fp1, Fp2, Fz, F3, F4, F7, F8, Cz, C3, C4, T7, T8, Pz, P3, P4, P7, P8, O, O1, O2

Computed EEG Parameters

Update rate	8 seconds
-------------	-----------

Median Frequency

Range	0.5 to 30 Hz
Resolution	0.1 Hz
Accuracy	\pm 10%

Spectral Edge Frequency (SEF)

SEF Frequencies	75, 85, 90, 95, 97, 98%
Range	0.5 to 30 Hz
Resolution	0.1 Hz
Accuracy	\pm 10%

Total Power

Range	44 to 100 dB
Resolution	1 dB
Accuracy	\pm 10%

Beta, Alpha, Theta, and Delta Powers

Percentage of total power falling in the corresponding band	
Range	0 to 100%
Resolution	1%
Accuracy	\pm 10%

Burst Suppression Ratio (BSR)

Percentage of time the waveform is isoelectric over the previous 60 seconds	
Range	0 to 100%
Resolution	1%
Accuracy	\pm 10%

Display Format

Analog waveform of 1 to 4 channels with corresponding parameter box display

EEG power spectrum

4 channel plot of power vs. frequency

Trend

24 hours for each EEG channel for all of the following parameters:

- Median frequency
 - Spectral edge frequency
 - Total power
 - Beta, alpha, theta and delta powers
 - Burst suppression ratio
-

Recordings

Analog EEG waveforms can be printed on the R50 strip recorder or on a laser printer.

The EEG Power Spectrum can be printed on a laser printer.

PRODUCT SPECIFICATIONS

Physical Specifications

Size (H x W x D)	36 x 132 x 140 mm (1.42 x 5.19 x 5.51 in.)
Weight	580 g (20 oz)
Connection to monitor	3 m pod communication cable
Connection to patient	+ and - input for each channel and universal neutral
	Referential mode block provides + input for each channel and neutral

Environmental Requirements

Temperature Range

Operating	15° C to 40° C (40°F to 104°F)
Storage	-20° C to 50° C (-4°F to 122°F)

Humidity

Operating	20% to 90%, non-condensing
Storage	10% to 95% with packaging

Barometric Pressure Range

Operating	525 to 795 mmHg (70 to 106 kPa)
Storage	375 to 795 mmHg (50 to 106 kPa)

Standards

IEC 60601-1 and applicable particular and collateral standards, IEC 60601-1-2, IEC 60601-2-26, Electromagnetic compatibility CISPR 11, Class B. Infinity EEG Pod complies with the Medical Devices Directive (MDD) 93/42 EEC and bears the CE mark.

ORDERING INFORMATION

Infinity EEG Pod	5736744
Includes interface cable to monitor, universal pole mount, EEG leads and electrode starter kit	

CORPORATE HEADQUARTERS

Draegerwerk AG & Co. KGaA
Moislinger Allee 53–55
23558 Lübeck, Germany

www.draeger.com

Manufacturer:

Draeger Medical Systems, Inc.
3135 Quarry Road
Telford, PA 18969-1042, USA

**REGION EUROPE CENTRAL
AND EUROPE NORTH**

Draegerwerk AG & Co. KGaA
Moislinger Allee 53–55
23558 Lübeck, Germany
Tel +49 451 882 0
Fax +49 451 882 2080
info@draeger.com

REGION EUROPE SOUTH

Dräger Médical S.A.S.
Parc de Haute Technologie
d'Antony 2
25, rue Georges Besse
92182 Antony Cedex, France
Tel +33 1 46 11 56 00
Fax +33 1 40 96 97 20
dlmfr-contact@draeger.com

REGION MIDDLE EAST, AFRICA

Draegerwerk AG & Co. KGaA
Branch Office
P.O. Box 505108
Dubai, United Arab Emirates
Tel +971 4 4294 600
Fax +971 4 4294 699
contactuae@draeger.com

REGION ASIA / PACIFIC

Draeger Medical
South East Asia Pte Ltd.
25 International Business Park
#04-27/29 German Centre
Singapore 609916, Singapore
Tel +65 6572 4388
Fax +65 6572 4399
asia.pacific@draeger.com

REGION NORTH AMERICA

Draeger Medical, Inc.
3135 Quarry Road
Telford, PA 18969-1042, USA
Tel +1 215 721 5400
Toll-free +1 800 437 2437
Fax +1 215 723 5935
info.usa@draeger.com

**REGION CENTRAL
AND SOUTH AMERICA**

Dräger Panama Comercial
S. de R.L.
Complejo Business Park,
V tower, 10th floor
Panama City
Tel +507 377 9100
Fax +507 377 9130
contactcsa@draeger.com

Locate your Regional Sales
Representative at:
www.draeger.com/contact

