

## GIF-H170

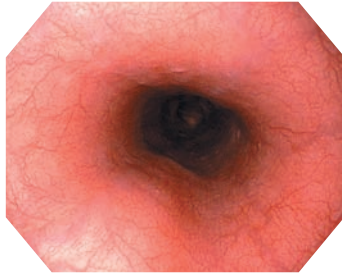
Outstanding HDTV image quality with a slimmer outer diameter.



## Main features

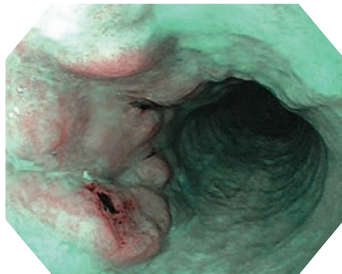
### HDTV image quality

HDTV captures and displays clear images with precise details and accurate colours, helping you to perform more advanced procedures.



### NBI (Narrow Band Imaging)

NBI facilitates the observation of capillaries and other structures on the mucosal surface. It helps identify suspicious areas.



### Close focus

Close focus enables you to obtain an enlarged close-up image by moving the scope tip as close as 2 mm from the mucosa.

### Slim design

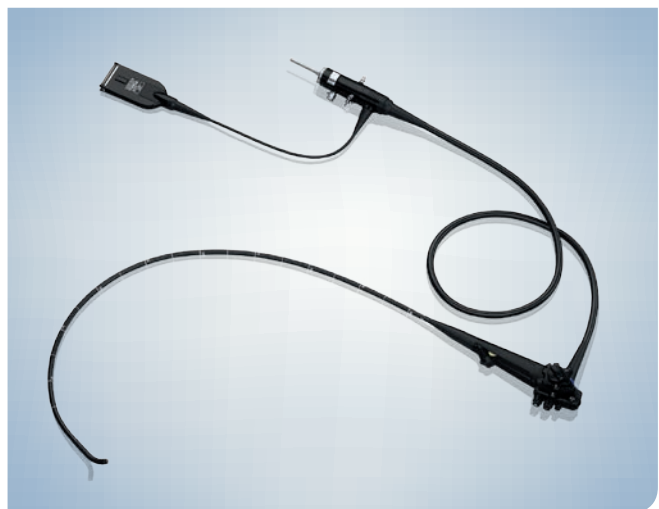
GIF-H170 offers an excellent balance of both size and performance with its 9.2 mm outer diameter.

### Waterproof Connector

The newly designed connector is fully submersible and therefore eliminates the need for a water-resistant cap, while minimising the risk of damage due to accidental immersion.

## Specifications

<b>Optical system</b>	Field of view	140°
	Direction of view	Forward viewing
	Depth of field	2–100 mm
<b>Insertion section</b>	Distal end outer diameter	9.2 mm
	Distal end enlarged	
	Insertion tube outer diameter	9.2 mm
	Working length	1,030 mm
<b>Instrument channel</b>	Channel inner diameter	2.8 mm
	Minimum visible distance	3 mm from the distal end
	Direction from which endotherapy accessories enter and exit the endoscopic image	
<b>High-frequency</b>	Cauterisation treatment	Available
<b>Bending section</b>	Angulation range	Up 210°
		Down 90°
		Right 100°
		Left 100°
<b>Total length</b>	1,350 mm	



Specifications, design and accessories are subject to change without any notice or obligation on the part of the manufacturer.